

groov▶▶**e**

GV-BT590 KIDZ
Wireless Headphones



USER GUIDE

wireless

AUDIO
PLAYBACK

wired

KIDZ
WIRELESS



Bluetooth®

30 Day Right To Return



We do not envisage any problems occurring with your Groov-e GV-BT590 KIDZ Wireless Headphones. However, for your peace of mind, should any fault occur, please return it within 30 days to your retailer with your proof of purchase for an exchange or refund.

12 Month Guarantee



This product is guaranteed for twelve months. Please retain your receipt as this will be required as proof of purchase. In the event that the device does not perform as expected then please contact your original point of purchase, should you require further assistance then please contact us.



Contact Us

Reach out to us at **info@groov-e.co.uk** or visit **www.groov-e.co.uk**

"Congratulations on your purchase and **Thank You** for choosing the **Groov-e GV-BT590** Bluetooth Headphones. Please read the guide carefully before using".

CAUTION

1. Please turn off the headphones and stow to avoid damage, scratches.
2. Please fully charge if the headphones are left unused for a long time.
3. The battery in the headphones is original please do not attempt to change it yourself.
4. Please keep the headphones in a dry place.
5. The operating temperature is 5°C to 35°C. Please Keep away from fire
6. Please do not bend or twist the headband to avoid distortion.
7. The ear cup should only be opened by a professional engineer.
8. To protect your hearing, you should not play music at high volume for long periods.
9. Do not use the headphones in dangerous situations that require you to be able to hear outside noise i.e. crossing the road

OVERVIEW

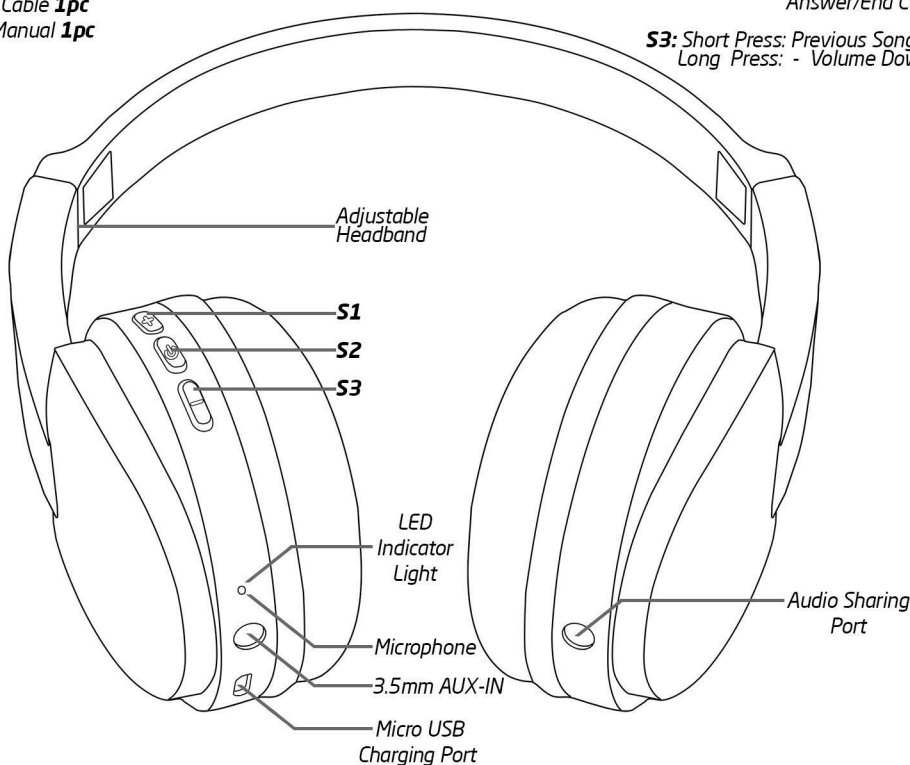
CONTENTS

1. Bluetooth Headphones **1pc**
2. Micro USB Charging Cable **1pc**
3. Audio Cable **1pc**
4. User Manual **1pc**

S1: Short Press: Next Song
Long Press: + Volume Up

S2: Long Press: Power On/Off
Short Press: Play/Pause
Answer/End Call

S3: Short Press: Previous Song
Long Press: - Volume Down



Note: Before using the headphones for the first time please charge the battery and pair the headphones with a compatible device (unless you are using them in passive mode).

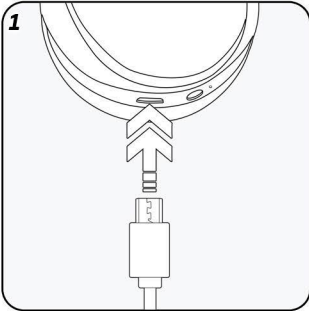
CHARGING

Charging

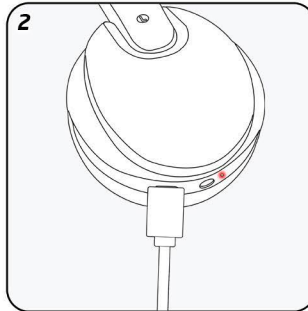
The Bluetooth headphones have a built-in rechargeable battery, please charge for at least 4 hours before first use. Following the initial charge, future charging will take 2 to 3 hours.

The headphones come with a Micro USB cable that can be connected to your computer or other device made for USB charging.

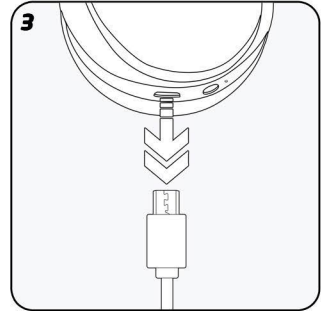
Plug the Micro USB end of the included USB cable into the Micro USB port on the headphones



Plug the other end into a USB port on your computer or other device made for USB charging. The LED indicator light illuminates while charging.



Once fully charged, the LED indicator light will turn off. Unplug the Micro USB end from the headphones.

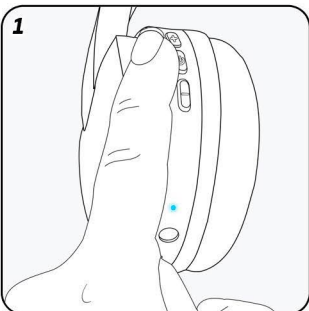


PAIRING

Pairing the Headphones with a Bluetooth Device

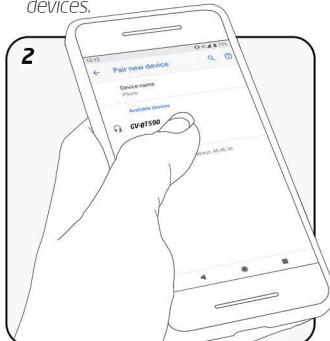
Ensure that your phone or Bluetooth device is switched on.

With the headphones switched-off, press the S2 button for about 3 seconds until the LED indicator light flashes quickly.

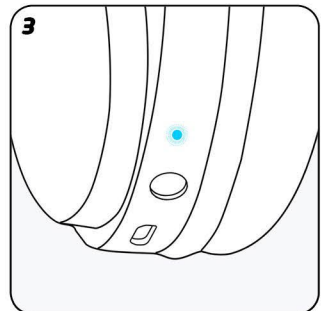


(If the headphones have been previously paired with another device, make sure the device is switched off).

Activate the Bluetooth feature on your phone or Bluetooth enabled device, set it to search for available devices.



Select GV-BT590 from the list of found devices on your Bluetooth enabled device. This will then automatically pair with the mobile device;



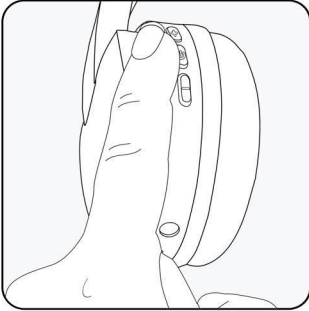
When pairing is successful, the LED light will flash slowly.

Notes: If the headphones have been previously paired with another device they will automatically connect with the device if they are powered on and within connecting range. If not, the headphones will enter standby mode with a blinking white light.

APPLICATION

The **GV-BT590** can make and receive hands-free calls with your compatible mobile phone and listen to music from a compatible Bluetooth device, but it should be within 10 meters (33 feet) of each other.

The headphones are compliant with the Bluetooth specification 5.0 and support the following Profile (A2DP) V1.0, and Audio Video Remote Control Profile (AVRCP) V 1.4 Input rating DC, 0.5A



CALLS

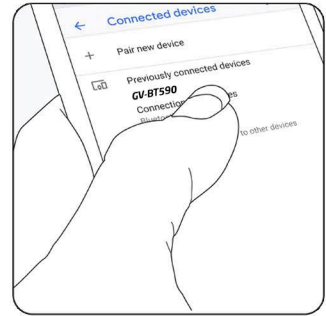
To make a call, use your mobile phone in the same way when the headphones are connected to it.

To answer a call, quickly press the **S2** button on the headphones. If music was being played it will pause during the call and resume when the call ends.

DISCONNECT THE HEADPHONES

To disconnect the headphones from your device, switch off the headphones, or disconnect it in the Bluetooth menu of your device.

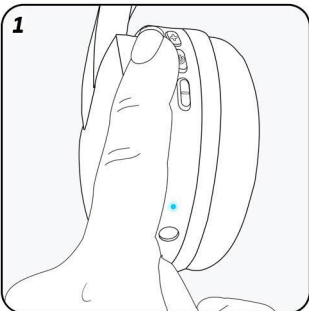
To connect the headphones to your phone or Bluetooth device that you have used them with previously just switch on the headphones, or make the connection in the Bluetooth menu of your device.



TURN HEADPHONES ON/OFF - ADJUST THE VOLUME

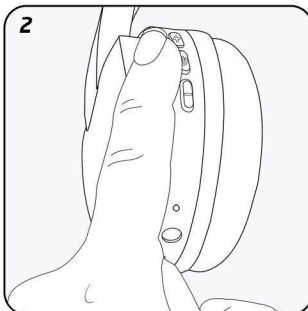
Switch ON

To switch on, press and hold the **S2** button for 2-3 seconds. The LED indicator light flashes quickly and is now pairing mode.



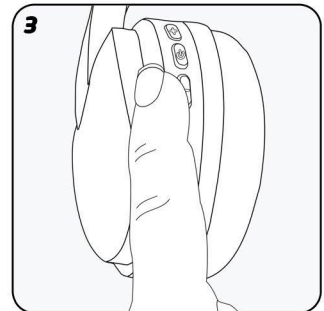
Switch OFF

To switch off, press and hold the **S2** button for 2-3 seconds. The LED indicator light goes off.



Volume UP/DOWN

To adjust the volume, long press the **S1** or **S3** button during a call or while listening to music.



If the headphones do not connect to a device within 2 minutes they will switch off automatically.

LISTEN TO MUSIC

To listen to music, connect the headphones to a phone or compatible Bluetooth device that supports A2DP Bluetooth profiles. The available music functions depend on your Bluetooth device. If you receive or make a call while listening to music, the music is paused until the call ends.

To play a song, select the track on your Bluetooth device and press the **S2** button on the headphones.

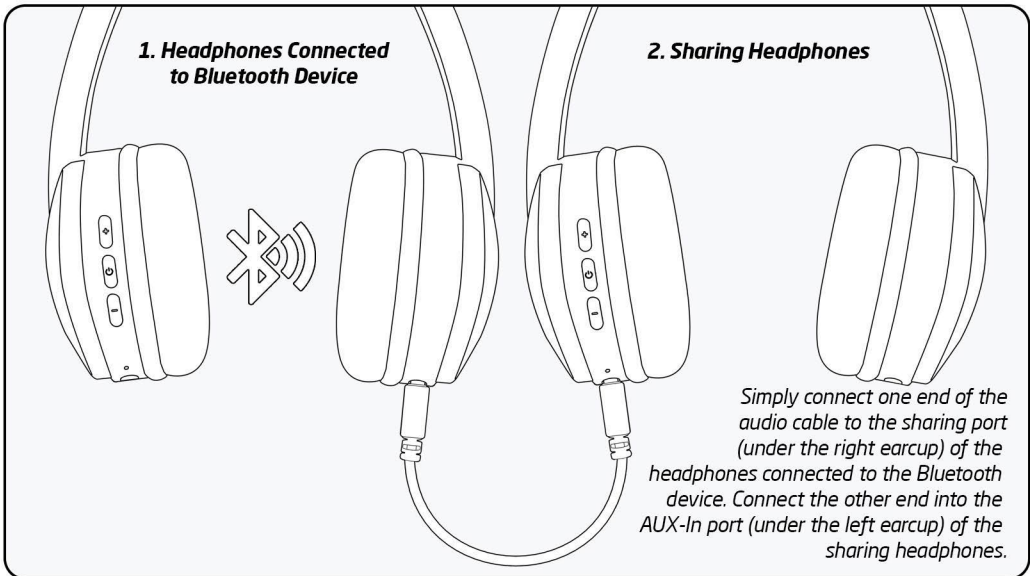
To pause or resume playing a song, press the **S2** button.

To select the next song during playback, press **S1** button once

To select previous song, press **S3** button once.

SHARE MUSIC WITH YOUR FRIENDS

With the built-in Audio Sharing port you can daisy chain GV-BT590 headphones together and listen to the same music from one device.



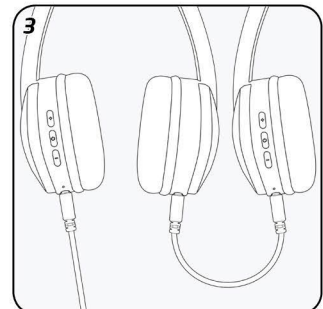
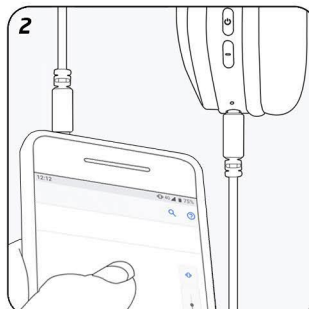
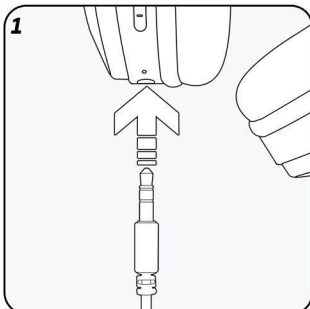
PASSIVE MODE

You can use the **GV-BT590** as a wired headphone to save batteries

Simply connect one end of the audio cable to the 3.5mm AUX-In port on the bottom of the left earcup.

Connect the other end to your music playing device.

You can still use the sharing port in passive mode, by daisy chaining headphones together.



SPECIFICATIONS

Driver Unit: 40mm neodymium

Bluetooth version: 5.0

Bluetooth profiles: HFP, A2DP and AVRCP Bluetooth protocols

Wireless Transmission Standard: CLASS 2

Channel: Two Channel Stereo

Connection Type: Point-to-Point

Wireless range: 10M (open area)

Frequency 2.4GHz-2.480GHz

Sensitivity: 95dB \pm 3dB

Impedance: 32 Ω

Battery: Polymer Lithium battery 3.7V / 250mAH

Charging time: 2 hours

Charging Port: Micro USB

Music playing time: 7.5 - 10 hours (Battery Fully Charged)

Standby time: (Paired with mobile standby) More than 24 hours (Battery Fully Charged)



BATTERY REMOVAL/DISPOSAL

This product contains batteries and should not be treated as normal household waste and should be recycled. Please take it to your nearest collection facility or for further details contact your local council or visit www.recycle-more.co.uk

Batteries contain substances that may be harmful to the environment and human health. Keep out of the reach of children and seek immediate medical help if swallowed.

Never throw batteries into a fire or attempt to open the outer casing.

Should your product develop a fault and your battery needs replacing for further advice on how to safely remove your battery please visit our website at www.groov-e.co.uk

Environment Protection

Waste electrical products should not be disposed of with household waste. Please recycle where facilities exist. Check with you Local Authority or retailer for recycling advice.



GUARANTEE

Subject to the conditions stated below, Groov-e guarantees this equipment against defects in workmanship or materials of its mechanical and electronic component parts (excluding styling, battery cells, magnetic tapes, re-chargeable batteries, user removeable memory devices, with the exception where the battery is inbuilt into the product) for a period of one year from the date of purchase. This product will be repaired or if necessary replaced free of charge if it has been proven to be defective within the one year warranty period.

1) Claims under this guarantee should be made through the authorised dealer/retailer from whom the equipment was purchased. If this is not possible, please contact Groov-e directly.

2) This guarantee is only valid when the equipment is purchased and retained within the United Kingdom and a valid proof of purchase has been provided.

3) This Guarantee Excludes:

(i) All damage caused through accident, misuse, wear and tear, neglect, installation and/or use in a manner inconsistent with technical and safety standards.

(ii) Alterations or adjustments made to equipment

(iii) Loss of data resultant from malfunction of hard drive or other storage device

(iv) Damage caused to any third party device as a result of using the product

4) No liability under this guarantee shall be incurred:

(i) In respect of damage or loss occurring during transit to or from the purchaser

(ii) Where the serial number plate of the equipment has been removed or altered in any way.

5) Groov-e shall not be liable for consequential damage, loss or injury arising from or in connection with the equipment, excepting only that nothing in this condition shall or shall be construed so as to exclude or restrict liability for negligence.

6) The cost of carriage to and from Groov-e shall be borne by the purchaser.

7) This guarantee is personal to the original purchaser and is not transferable

8) If the equipment, in respect of which a claim hereunder is made, is found on examination to comply with the published specifications, a test fee may be incurred.

This guarantee is in addition to and does not in any way affect any statutory or other right of consumer purchasers, including those rights in relation to sections 13 to 15 of the Sale of Goods Act 1979, the Sale and Supply of Goods to Consumer Regulations 2002, The Consumer Rights Act 2015 or the Sale of Goods and Supply of Services Act 1980 (for ROI).

DECLARATION OF CONFORMANCE

Groov-e hereby declares that this product is in compliance with the essential requirements and other relevant provisions of the Radio Equipment Directive 2014/53/EU. The complete declaration of conformity can be requested from us at:

groov»e
Unit J
Braintree Industrial Estate
Braintree Road
Ruislip
Middlesex
HA4 0EJ UK

www.groov-e.co.uk
Email: info@groov-e.co.uk
Telephone: 020 8845 7704

MADE IN CHINA