

groov▶▶*e*
My Lock



GV-TR01
Smart Fingerprint
Padlock

groov-e.co.uk



30 Day Right To Return

We do not envisage any problems occurring with your groov-e GV-TRO1 My Lock Smart Fingerprint Padlock. However, for your peace of mind, should any fault occur, please return it within 30 days to your retailer with proof of purchase for an exchange or refund.



12 Month Guarantee

This product is guaranteed for twelve months. Please retain your receipt as this will be required as proof of purchase in the event that the device does not perform as expected then please contact your original point of purchase, should you require further assistance then please contact us.



Extended Warranty

Please register your product within 30 days from date of purchase www.groov-e.co.uk/warranty. Proof of purchase required.



Contact Us

Reach out to us at info@groov-e.co.uk or visit www.groov-e.co.uk

“Congratulations on your purchase and **Thank You** for choosing the groov-e GV-TR01 **My Lock Smart Fingerprint Padlock.**”



IMPORTANT SAFETY INFORMATION

Please read this important information carefully before you use the My Tag and save it for future reference.

- 1.** Keep this product and all of its parts out of reach of small children.
- 2.** Batteries are to be inserted with the correct polarity.
- 3.** The supply terminals are not to be short-circuited.
- 4.** This product does not contain any user serviceable parts. Unauthorised handling of the device may damage it and will void your warranty.
- 5.** Keep it dry. Avoid exposure to precipitation, humidity and liquids which could all affect the product circuitry.
- 6.** Do not leave it in low temperatures as moisture can form inside the product, which may damage the circuit board.
- 7.** Do not leave it in high temperatures as electronic devices and plastic parts may warp in heat.
- 8.** Keep it away from bright sunlight or heat sources, such as a radiator.
- 9.** Never place any type of candle or naked flame on top of, or near the product.



BATTERY WARNING!

KEEP OUT OF REACH OF CHILDREN

Swallowing can lead to chemical burns, perforation of soft tissue, and death. Severe burns can occur within 2 hours of ingestion. Seek medical attention immediately.



 **CAUTION!**

Contains a coin battery. Hazardous if swallowed.

 **CAUTION!**

A coin battery can cause serious internal chemical burns if swallowed.

 **CAUTION!**

Dispose of used batteries immediately. Keep new and used batteries away from children. If you think batteries might have been swallowed or placed inside any part of the body, seek immediate medical attention. If the battery compartment does not close securely, stop using the product and keep it away from children.

NO OBVIOUS SYMPTOMS:

Unfortunately, it is not obvious when a button or coin battery is stuck in a child's oesophagus (food pipe).

There are no specific symptoms associated with this. The child might:

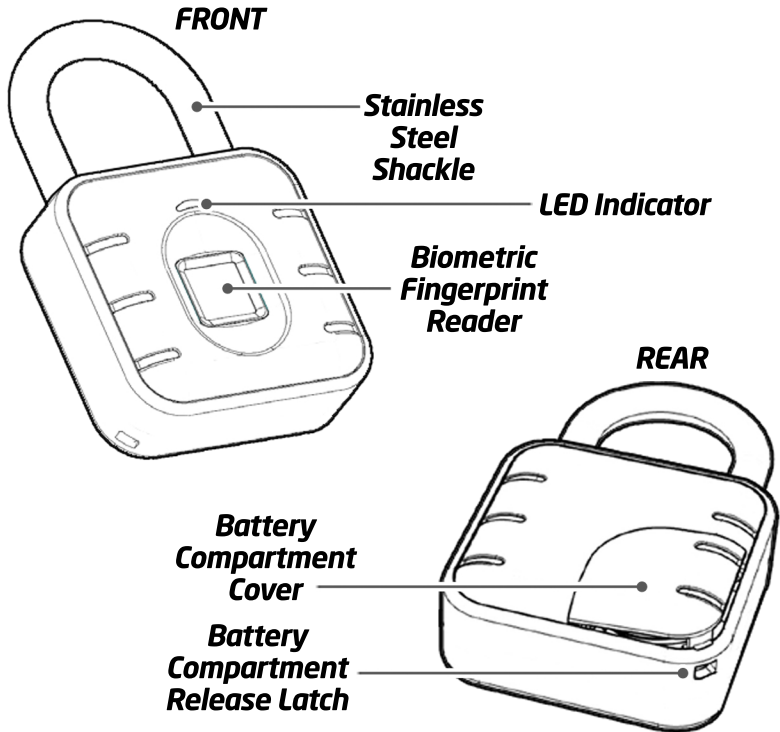
- Cough, gag or drool a lot;*
- Appear to have a stomach upset or a virus;*
- Be sick;*
- Point to their throat or stomach;*
- Have a pain in their abdomen, chest or throat;*
- Be tired or lethargic;*
- Be quieter or more clingy than usual or otherwise "not themselves";*
- Lose their appetite or have a reduced appetite; and*
- Not want to eat solid food / be unable to eat solid food.*

These sorts of symptoms vary or fluctuate, with the pain increasing and then subsiding. A specific symptom to button and coin battery ingestion is vomiting fresh (bright red) blood. If the child does this seek immediate medical help. The lack of clear symptoms is why it is important to be vigilant with "flat" or spare button or coin batteries in the home and the products that contain them.

OVERVIEW

IN THE BOX

- **1 x** GV-TR01 My Lock (including 2 x CR2032 coin batteries)
- **1 x** User Manual



IP67 WATERPROOF & DUST TIGHT

Your My Lock is waterproof, dust tight, as well as weatherproof in temperatures between -10 to 45 degrees.

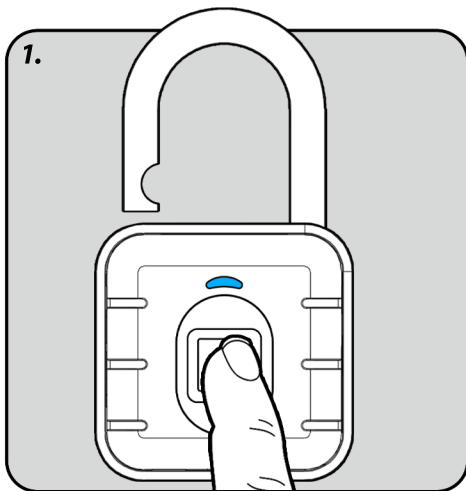
OPERATION

Power On

Remove the plastic strip on the back of the lock to power on for the first time.

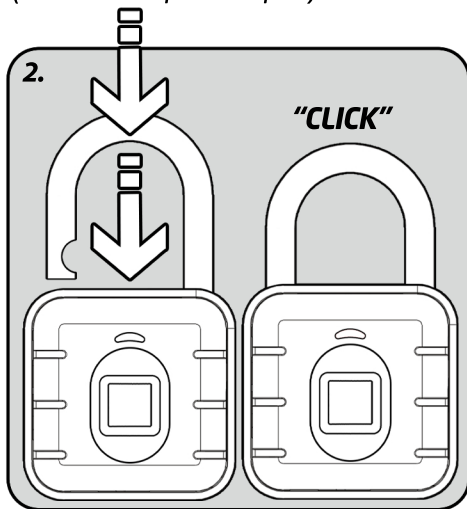
How to Unlock for the first time

Place your fingerprint against the Biometric fingerprint reader. The LED indicator light will turn blue and the stainless steel shackle will open.



How to Lock

Press the stainless steel shackle down into the locking mechanism until you hear it click into place. (To unlock repeat step 1.)



Biometric Fingerprint Recognition

The locks default setting is set to unlock with any fingerprint contact. The Blue indicator light is displayed to show that no fingerprints have been added to the padlocks memory when unlocking.

You must register new fingerprints to exit the default model. (The My Lock can store a total of 10 fingerprints to it's memory). The Green indicator light is then displayed to show that a registered fingerprint is saved to the padlocks memory when unlocking.

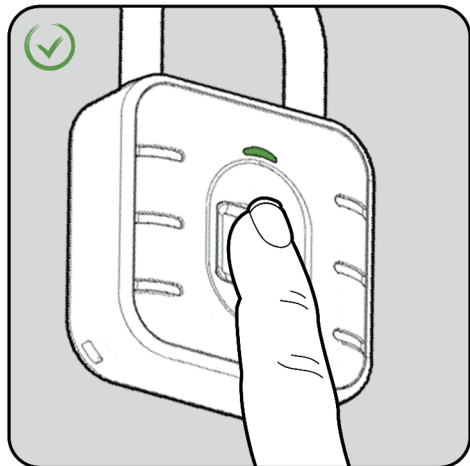
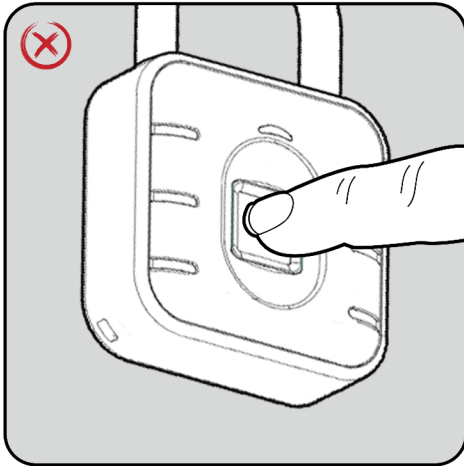
OPERATION

Registering Fingerprints

1. Press and hold your fingerprint against the Biometric Fingerprint Reader for around 5 seconds keeping it there until the blue LED light turns on. Next tap different parts of your fingerprint approx 10 times against the fingerprint reader (the light will flash blue) until the light turns green.

2. To add another fingerprint the padlock needs to be unlocked by a current registered fingerprint and then you follow the process of registering fingerprints again. Once 10 fingerprints are registered the light will flash red if you try to register more.

Correct way to register fingerprints



OPERATION

Delete all saved Fingerprints

1. Press and hold a pre-registered fingerprint against the fingerprint reader.

2. The color of LED indicator light will change from blue to white and then to red. Release your finger once the light turns red. All registered fingerprints are now successfully deleted.

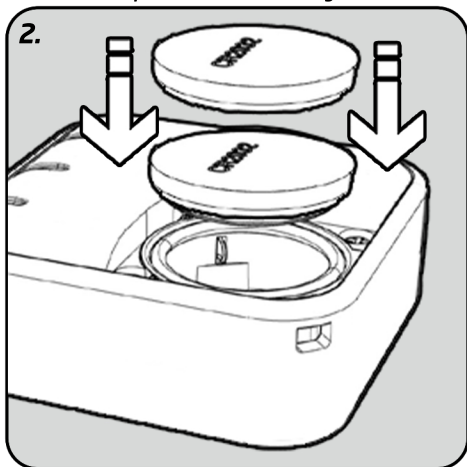
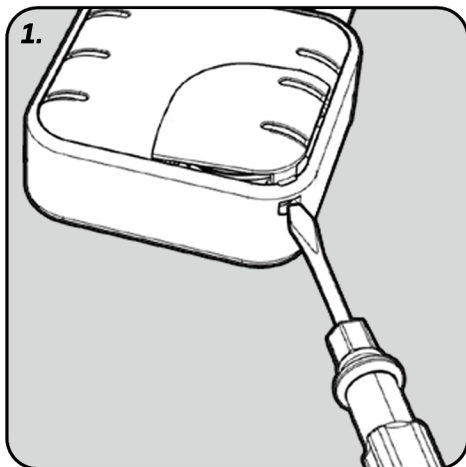
TROUBLE SHOOTING

If fingerprints are not recognised by your My Lock please refer to the previous steps for registering fingerprints. Then try deleting all saved fingerprints and start again. If this fails to fix the problem please change the button cell and try again.

BATTERY REMOVAL

Using a slotted screwdriver release the latch to open the battery cover

Place the button cell batteries in anode face up and cathode face down. Then replace the battery cover.

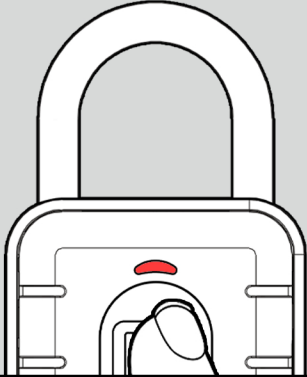


Note: Removing the batteries will not delete the saved fingerprints in the padlocks memory.

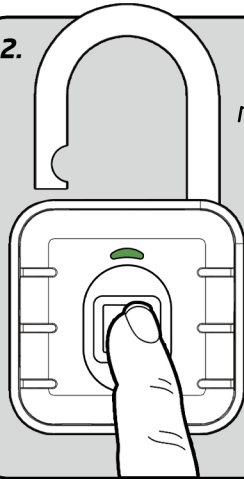
OPERATION

When padlock is locked

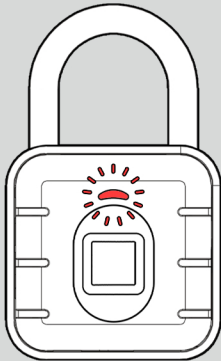
- 1. Red Light**
fingerprint not recognised



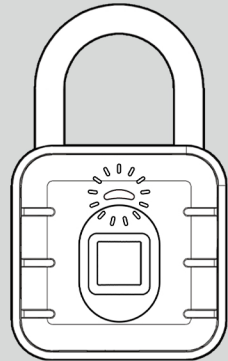
- 2. Green Light**
fingerprint recognised and padlock will unlock



- 3. Low battery warning**
LED light will flash red



- 4. Flashing white light**
Error (try again)



BATTERY DISPOSAL

CAUTION!

Dispose of used batteries immediately. Keep new and used batteries away from children. If you think batteries might have been swallowed or placed inside any part of the body, seek immediate medical attention. If the battery compartment does not close securely, stop using the product and keep it away from children.

This product contains batteries and should not be treated as normal household waste and should be recycled. Please take it to your nearest collection facility or for further details contact your local council or visit www.recycle-more.co.uk

Batteries contain substances that may be harmful to the environment and human health. Keep out of the reach of children and seek immediate medical help if swallowed.

Never throw batteries into a fire or attempt to open the outer casing. Should your product develop a fault please visit our website at www.groov-e.co.uk

Environment Protection

Waste electrical products should not be disposed of with household waste. Please recycle where facilities exist. Check with your Local Authority or retailer for recycling advice.



FEATURES

Easy to use - your finger is the key!

No keys, password or apps required

Secure your luggage, gates, sheds, garages, lockers at gyms, schools & work

Zinc alloy with stainless steel shackle

Biometric fingerprint recognition

Multi-user: 10 fingerprints memory

IP67 Weatherproof

LED light indicator

Low battery warning

Standby time: 12 months

2 x CR2032 batteries (included)



FINGERPRINT
RECOGNITION



IP67
WEATHERPROOF



HEAVY-DUTY
SHACKLE

GUARANTEE

Subject to the conditions stated below, groov-e guarantees this equipment against defects in workmanship or materials of its mechanical and electronic component parts (excluding styling, battery cells, magnetic tapes, re-chargeable batteries, user removeable memory devices, with the exception where the battery is inbuilt into the product) for a period of one year from the date of purchase. This product will be repaired or if necessary replaced free of charge if it has been proven to be defective within the one year warranty period.

1) Claims under this guarantee should be made through the authorised dealer/retailer from whom the equipment was purchased. If this is not possible, please contact groov-e directly.

2) This guarantee is only valid when the equipment is purchased and retained within the United Kingdom and a valid proof of purchase has been provided.

3) This Guarantee Excludes:

(i) All damage caused through accident, misuse, wear and tear, neglect, installation and/or use in a manner inconsistent with technical and safety standards.

(ii) Alterations or adjustments made to equipment

(iii) Loss of data resultant from malfunction of hard drive or other storage device

(iv) Damage caused to any third party device as a result of using the product.

4) No liability under this guarantee shall be incurred:

(i) In respect of damage or loss occurring during transit to or from the purchaser

(ii) Where the serial number plate of the equipment has been removed or altered in any way.

5) groov-e shall not be liable for consequential damage, loss or injury arising from or in connection with the equipment, excepting only that nothing in this condition shall or shall be construed so as to exclude or restrict liability for negligence.

6) The cost of carriage to and from groov-e shall be borne by the purchaser.

7) This guarantee is personal to the original purchaser and is not transferable.

8) If the equipment, in respect of which a claim hereunder is made, is found on examination to comply with the published specifications, a test fee may be incurred.

This guarantee is in addition to and does not in any way affect any statutory or other right of consumer purchasers, including those rights in relation to sections 13 to 15 of the Sale of Goods Act 1979, the Sale and Supply of Goods to Consumer Regulations 2002, The Consumer Rights Act 2015 or the Sale of Goods and Supply of Services Act 1980 (for ROI).

groov▶▶e

Unit J

Braintree Road

Braintree Industrial Estate

Ruislip

Middlesex

HA4 0EJ

Authorised EU Representative

Rashmian EU Ltd

Robwyn House

Suite 3E

Corrintra

Castleblayney

Co. Monaghan

Ireland

www.groov-e.co.uk

Email: info@groov-e.co.uk

Telephone: 020 8839 0978

Register your purchase for extended warranty

www.groov-e.co.uk/warranty