

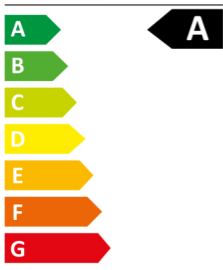
groov-e

GV-WC07 Astra



groov-e

GV-WC07 ASTRA



2
kWh/1000h



2021 No. 1095



User Manual

LED Lamp with Wireless
Charger & Bluetooth
Speaker



groov-e.co.uk



30 Day Right To Return

We do not envisage any problems occurring with your Groov-e GV-WC07 Astra. However, for your peace of mind, should any fault occur, please return it within 30 days to your retailer with proof of purchase for an exchange or refund.



12 Month Guarantee

This product is guaranteed for twelve months. Please retain your receipt as this will be required as proof of purchase in the event that the device does not perform as expected then please contact your original point of purchase, should you require further assistance then please contact us.



Extended Warranty

Please register your product within 30 days from date of purchase www.groov-e.co.uk/warranty. Proof of purchase required.



Contact Us

Reach out to us at info@groov-e.co.uk or visit www.groov-e.co.uk

"Congratulations on your purchase and **Thank You** for choosing the groov-e **GV-WC07 Astra**. Please read the guide carefully before using".

SAFETY INSTRUCTIONS

- 1. READ INSTRUCTIONS** - All the safety and operating instructions should be read before the appliance is operated.
- 2.** Do not use unapproved or incompatible power supply's or chargers.
- 3.** Please keep the product dry.
- 4.** Please disconnect the product from its power supply before cleaning
- 5.** To clean please use a dry, clean soft cloth to wipe.
- 6.** For optimal performance please remove your phone's protective case before you place it on the wireless charger.
- 7.** To ensure constant charging, please adjust the phone's position so it is correctly in contact with the sensor area for wireless charging.

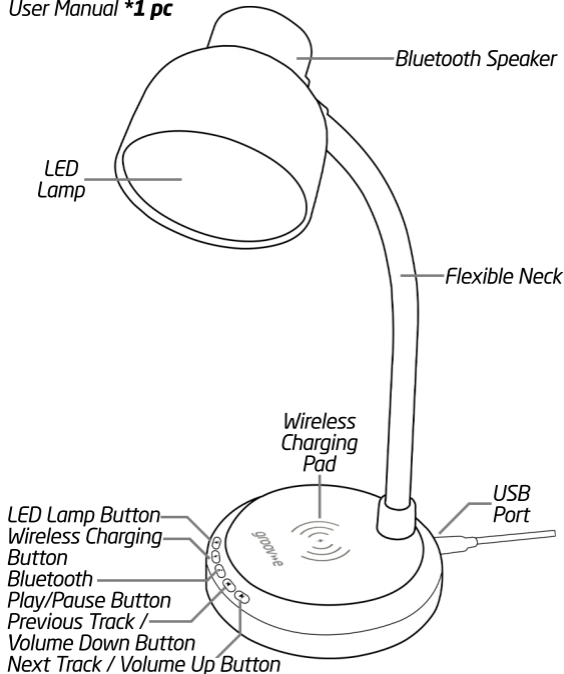
Overview

BOX CONTENTS

GV-WC07 Astra *1 pc

USB A to USB TYPE-C Cable * 1 pc

User Manual *1 pc

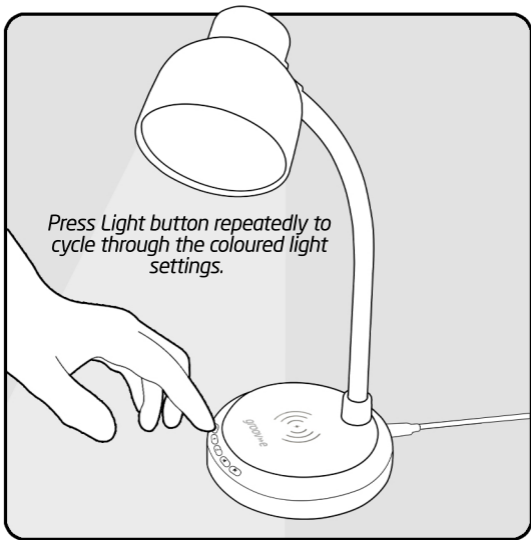


Operation

LED Lighting

Long press the lighting button to turn the lighting on/off, then short press the lighting button to scroll through the different light colour modes.

There are 9 LED light modes to choose from White (reading light), Red, Green, Blue, Yellow, Pink, Cyan, Multi-Colour Soft Fade, Multi-Colour Flash.



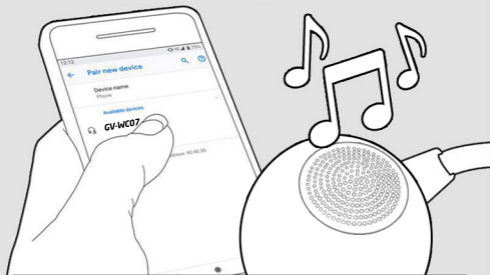
Operation

Bluetooth Speaker

The Bluetooth speaker function will be available to enter pairing mode once the lamp is connected to a power supply via the USB Type-C Cable. Long Press the Bluetooth button for 3 seconds on the GV-WC07 Astra to activate pairing mode and an audible sound is heard as confirmation. Short press the Previous and Next Track buttons to make your track selections. Long press the Previous/Next track buttons to control volume up/down, You can also Play/Pause your music by short pressing the Bluetooth button.

To disconnect the Bluetooth function. Long press the Bluetooth button for 3 seconds again or unpair from your Bluetooth device.

Activate the Bluetooth function on your Bluetooth enabled device (phone, tablet etc) and set it to search for Bluetooth devices, your device will discover the Bluetooth speaker as "GV-WC07", select it and your device will confirm pairing. You can then start to play music through the speaker.



If requested, please enter password or PIN 0000 on your Bluetooth device and press "Yes" to "Confirm".

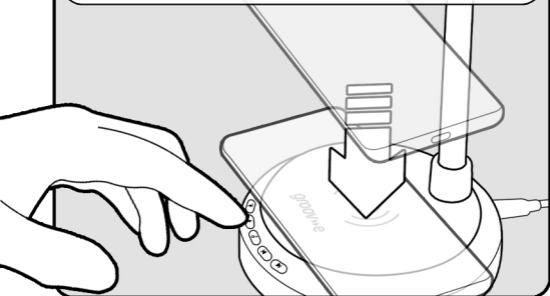
Operation

Wireless Charging

Place your Wireless charging compatible Smart phone on top of the Wireless charging panel of the GV-WC07 Astra, ensuring that the charging area of the phone (usually the middle) is aligned with the charging area of the charging panel.

Press the Wireless Charging button to activate charging function, during charging the lightning symbol on the button will either

1. Flash slowly confirming wireless charging is in progress.
2. Flash quickly if it detects a non-wireless charging enabled Mobile device.
3. Remain solid if it detects any other object.



Please make sure that your phone supports the wireless charging function. If your phone does not support the wireless charging function, then you would need to purchase a separate wireless charging adaptor before you can start wireless charging.

Note: Please remove any protective case that may inhibit the wireless charging function.

Specifications

Wireless Charger

Input: 9V/2A

Output: 10W(Max)-Fast Charging

Output: 10W / 7.5W / 5W

(QC 3.0 adaptor required for 10W charging)

Frequency range: 110-205 kHz

Bluetooth Speaker

Bluetooth chipset: version 5.0

Bluetooth frequency range:
20-20khz

Power supply: USB, 5V/500mA

Speaker power: 3W

LED Lamp

LED Bulbs: 9 RGB

Brightness: 17LM

Lifespan: 50,000 hours

Features

- *Wireless charger*
- Charge your wireless enabled device
- *Wireless Bluetooth speaker*
- Play your favourite tunes
- *3W speaker power*
- *9 LED colour modes*
- *Creative mood lighting*
- *Flexible neck*
- *Rubberised finish*
- *Type-C-USB powered*
- *Type-C USB cable (included)*
- *Portable & Lightweight*
- *Ideal for any room in the house or office*
- *Height 36cm (fully extended)*



Wireless
Charging



Bluetooth
Connectivity



3W
Speaker



9 Light
Modes



Mood
Lighting



USB
Powered

Environment Protection

Waste electrical products should not be disposed of with household waste. Please recycle where facilities exist. Check with your Local Authority or retailer for recycling advice.



GUARANTEE

Subject to the conditions stated below, groov-e guarantees this equipment against defects in workmanship or materials of its mechanical and electronic component parts (excluding styling, battery cells, magnetic tapes, re-chargeable batteries, user removeable memory devices, with the exception where the battery is inbuilt into the product) for a period of one year from the date of purchase. This product will be repaired or if necessary replaced free of charge if it has been proven to be defective within the one year warranty period.

1) Claims under this guarantee should be made through the authorised dealer/retailer from whom the equipment was purchased. If this is not possible, please contact Groov-e directly.

2) This guarantee is only valid when the equipment is purchased and retained within the United Kingdom and a valid proof of purchase has been provided.

3) This Guarantee Excludes:

(i) All damage caused through accident, misuse, wear and tear, neglect, installation and/or use in a manner inconsistent with technical and safety standards.

(ii) Alterations or adjustments made to equipment

(iii) Loss of data resultant from malfunction of hard drive or other storage device

(iv) Damage caused to any third party device as a result of using the product.

4) No liability under this guarantee shall be incurred:

(i) In respect of damage or loss occurring during transit to or from the purchaser

(ii) Where the serial number plate of the equipment has been removed or altered in any way.

5) Groov-e shall not be liable for consequential damage, loss or injury arising from or in connection with the equipment, excepting only that nothing in this condition shall or shall be construed so as to exclude or restrict liability for negligence.

6) The cost of carriage to and from Groov-e shall be borne by the purchaser.

7) This guarantee is personal to the original purchaser and is not transferable.

8) If the equipment, in respect of which a claim hereunder is made, is found on examination to comply with the published specifications, a test fee may be incurred.

This guarantee is in addition to and does not in any way affect any statutory or other right of consumer purchasers, including those rights in relation to sections 13 to 15 of the Sale of Goods Act 1979, the Sale and Supply of Goods to Consumer Regulations 2002, The Consumer Rights Act 2015 or the Sale of Goods and Supply of Services Act 1980 (for ROI).

DECLARATION OF CONFORMANCE

Groov-e hereby declares that this product is in compliance with the essential requirements and other relevant provisions of the Radio Equipment Directive 2014/53/EU. The complete declaration of conformity can be requested from us at:

groov»e

**Unit J
Braintree Industrial Estate
Braintree Road
Ruislip
Middlesex
HA4 0EJ UK**

www.groov-e.co.uk

Email: info@groov-e.co.uk

Telephone: 020 8839 0978

Authorised EU Representative

**Rashmian EU Ltd
Robwyn House
Suite 3E
Corrintra
Castleblayney
Co. Monaghan
Ireland**

*Register your purchase for extended warranty
www.groov-e.co.uk/warranty*

MADE IN CHINA